

MB Production , Globally Living



MB Tiny House
MB Production, Globally Living

MB TINY HOUSE CATALOG

WHERE EVERY HOUSE HAS A STORY



MB Tiny House
MB Production, Globally Living

MB TINY HOUSE



EXPANDING AND REACHING YOU

MB Tiny House, operating under **MB World Group**, is Turkey's leading manufacturer of tiny houses, which have become highly popular in recent years. Having manufactured trailers, axles, and chassis for heavy vehicles since 1980, our company began producing homes on wheels in 2020 with the vision of becoming a global brand. MB Tiny Houses are built for lifelong use, 365 days a year, and are designed to meet every expectation you would have of a traditional home.

Vision: To be the world's best manufacturer of mobile living spaces.

Mission: To deliver exceptional products and services through high-quality and innovative designs.

Our Values: Universality, Change, Achieving Excellence, Discipline, Sustainability.



MB Tiny House
www.mbtinyhouse.com

WHY MB



MB Tiny House
MB Production, Globally Living

Even the trailer — from infrastructure to superstructure — is entirely manufactured in-house. This allows us to offer the highest quality at the most optimal price.

Thanks to its 4-layer insulation system, MB Tiny House owners can use their homes 365 days a year.

We offer the highest value and product quality available in the sector.

MB Tiny Houses have their own **O2, O3, and O4** type approval certificates. This enables them to be registered and licensed with a number plate, and thanks to our self-manufactured, durable trailer, they provide full mobility.

We provide updates throughout the order and production process, and after delivery, we continue to offer solutions tailored to our customers' needs and expectations.

MB Tiny House is approved by the European Manufacturers Association. Our products are used throughout Turkey and Europe.



MB Tiny House



MB Tiny House
MB Production, Globally Living



High Quality



Portability



After-Sales Service
Support



All-Season Usability



O2, O3, O4
Compliance
Certificates



Eco-Friendly
Living



Regulatory Compliance



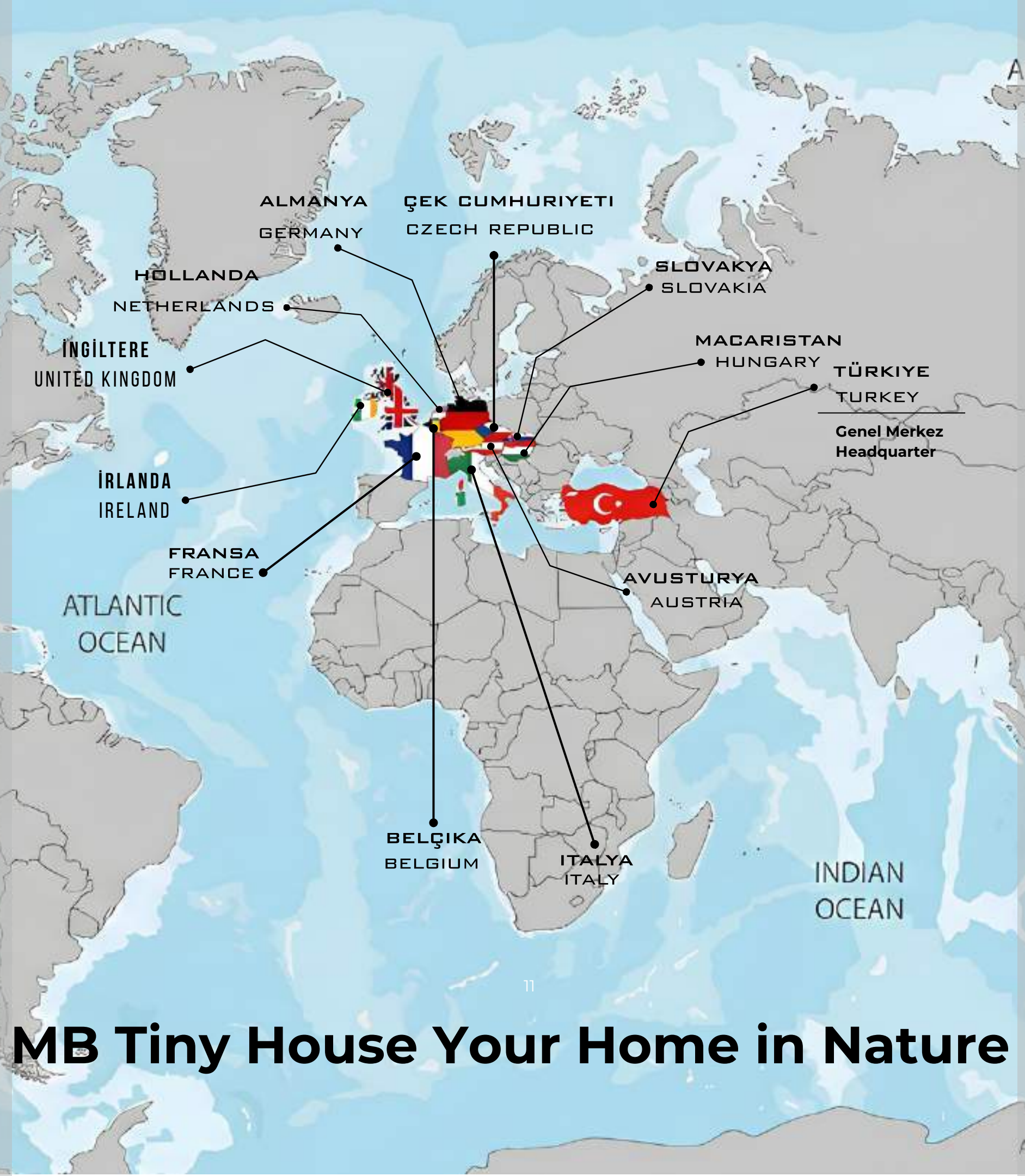
Exports to 15
Countries



MB Tiny House
MB Production, Globally Living

The Most Preferred Tiny House in Europe

MB Tiny House Your Home in Nature



+100

HUNDREDS OF HAPPY AND SATISFIED INDIVIDUAL AND CORPORATE CUSTOMERS.



OUR COMPANY IS REGISTERED AND APPROVED BY THE EUROPEAN UNION IN MANUFACTURERS LIST CATEGORY.



TURKEY AND EUROPE HOTEL, CAMPING PROJECTS.

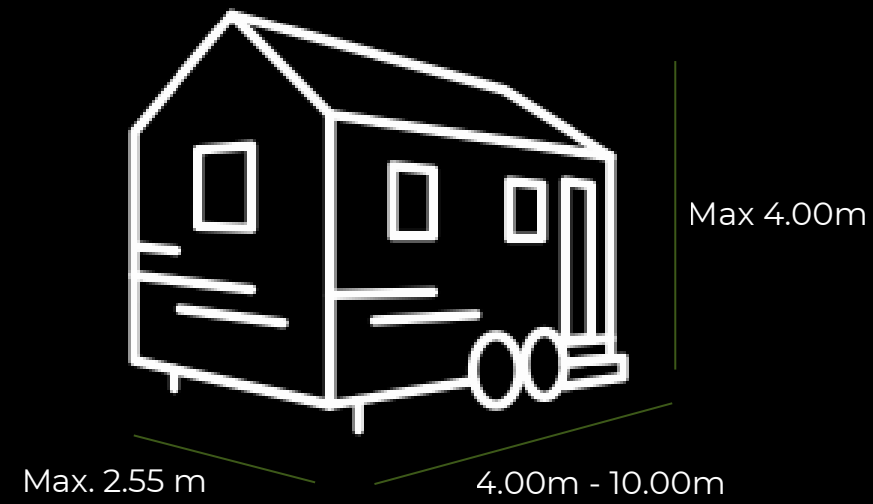
Models

MB Tiny House products are licensed and registered vehicles. Therefore, they are manufactured in compliance with highway regulations and standards.

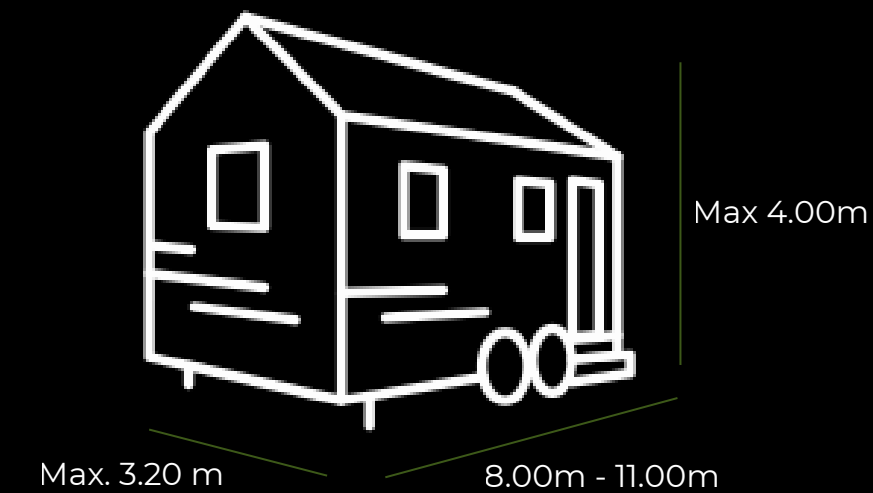


MB Tiny House
MB Production, Globally Living

O2 Model Dimensions



O3 Model Dimensions



Step Into a Peaceful Living Space Where Minimalism Meets Comfort with MB Tiny House, in Harmony with Nature.





MB Tiny House
MB Production, Globally Living

0 2 A N D 0 3

T Y P E -

A P P R O V E D

M O D E L S



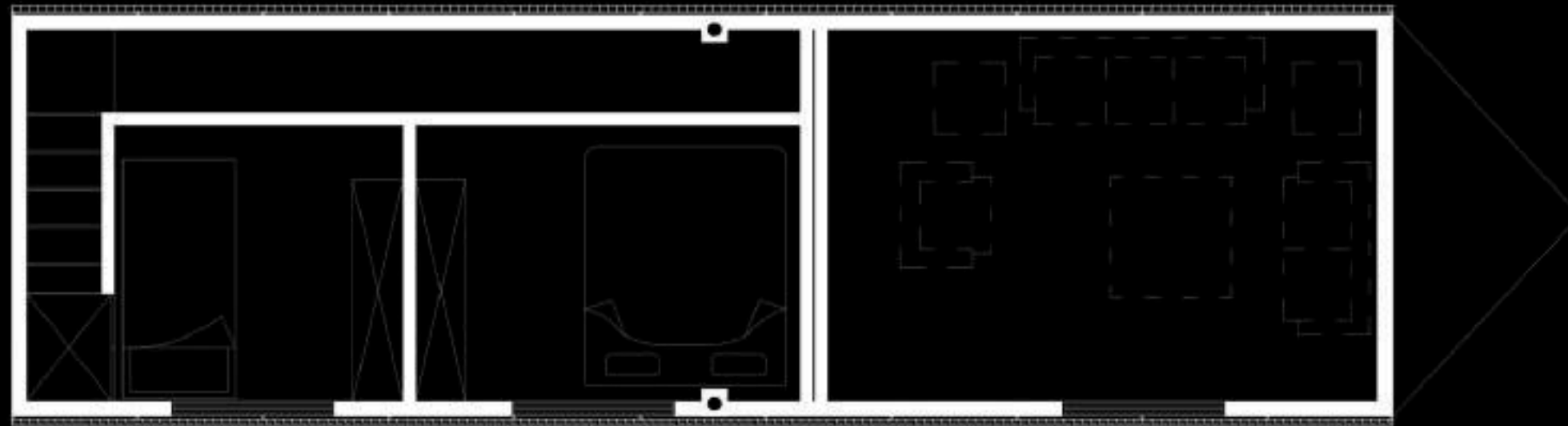
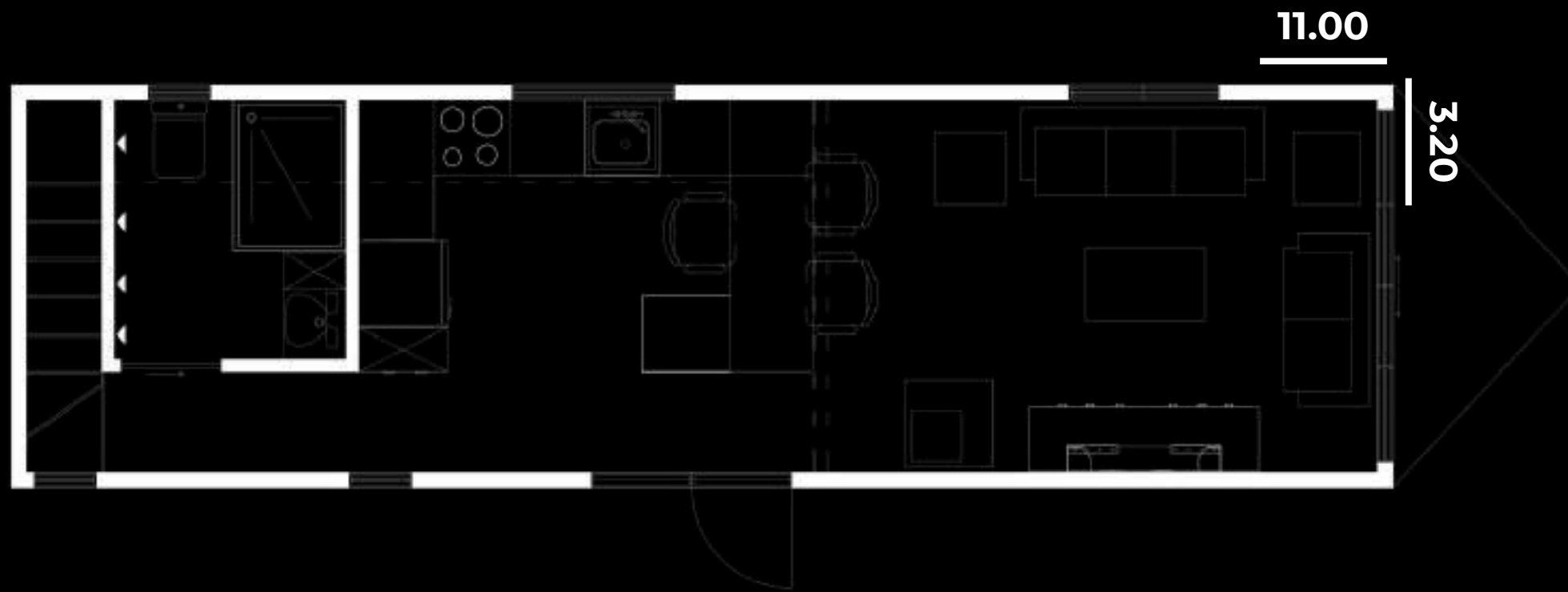


MB Tiny House
MB Production, Globally Living



MB11 Titan

MB11 Titan



MB Tiny House
MB Production, Globally Living



General Features

MB 11 Titan



MB Tiny House
MB Products Globally Living



Length:	Width:	Capacity:	Category:
11.00 m	3.20 m	6-8	O3

The MB11 Titan Tiny House is the largest and most innovative mobile home model in Türkiye, developed by MB Tiny House, and comes with O3 Type Approval Certification.

With dimensions of 11.00 m in length and 3.20 m in width, the MB11 Titan offers a total living space of 60 m², making it the largest tiny house model in Türkiye.

The most striking feature of the MB11 Titan is its hydraulic roof system, which can be raised and lowered. Thanks to this innovative design, maximum spaciousness is achieved inside the home. The model includes two loft areas, each providing a standing height of 200 cm. Additionally, the living room reaches a height of 4 meters. This feature goes beyond the traditional tiny house loft concept and offers the comfort of a real room. When the hydraulic system is opened, the height reaches 5 meters, while when closed, it remains within the legal tiny house limit at 4 meters.





MB Tiny House
MB Production, Globally Living



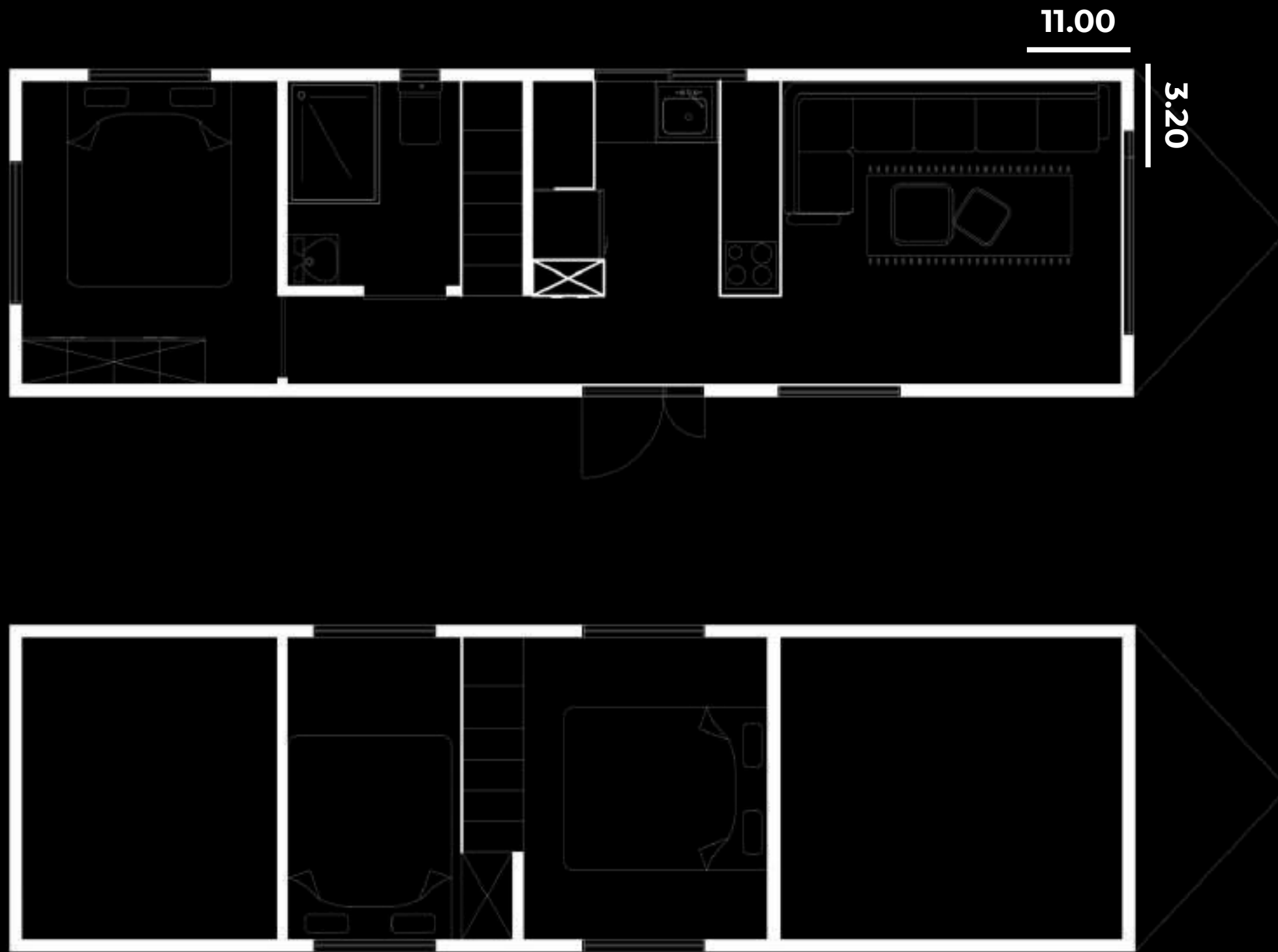


MB Tiny House
MB Production, Globally Living



MB11 Prime

MB11 Prime



MB Tiny House
MB Production, Globally Living



General Features

MB 11 Prime



MB Tiny House
MB Production, Globally Living



Length: 11.00 m **Width:** 3.20 m **Capacity:** 6-8 **Category:** O3

MB11 Prime is an O3 Type-Approved tiny house model, measuring 11 meters in length and 3.20 meters in width. With its spacious volume and functional layout, it is suitable for permanent living.

With a total usable area of 52 m², and offering up to 80 m² of living space including the veranda, it provides a level of comfort far beyond the typical tiny house concept. Its large and airy living room, separate bedroom, two loft areas, practical kitchen, and functional bathroom create an ideal living space for both individuals and families.

Strong in terms of energy efficiency, MB11 Prime can reach an electricity generation capacity of 5.94 kW thanks to 9 solar panels that can be installed on the roof. This feature provides a significant advantage for users aiming for off-grid living or reduced energy costs.



MB Tiny House
MB Production, Globally Living



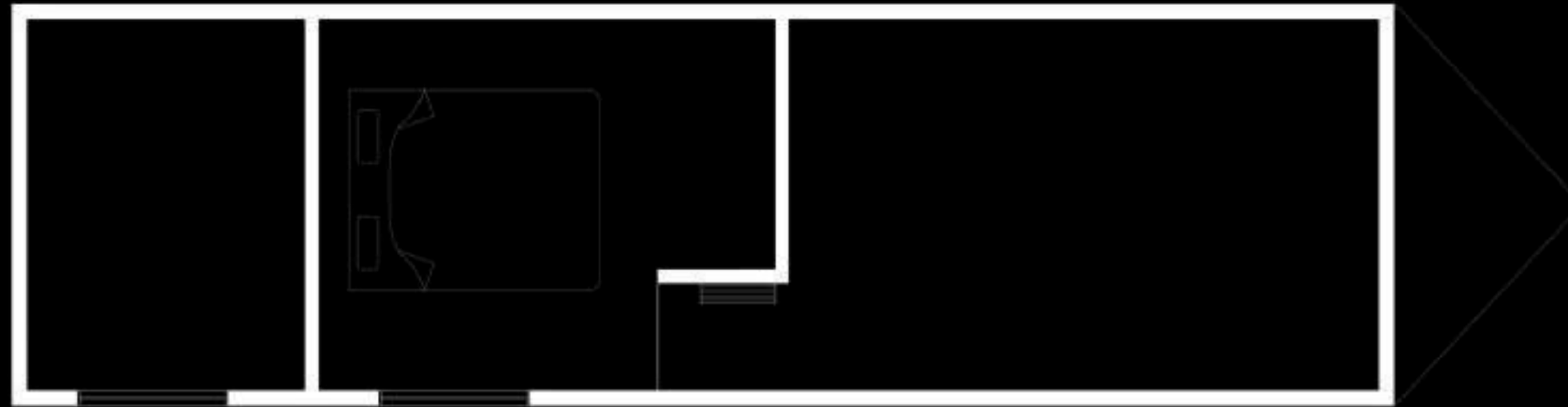
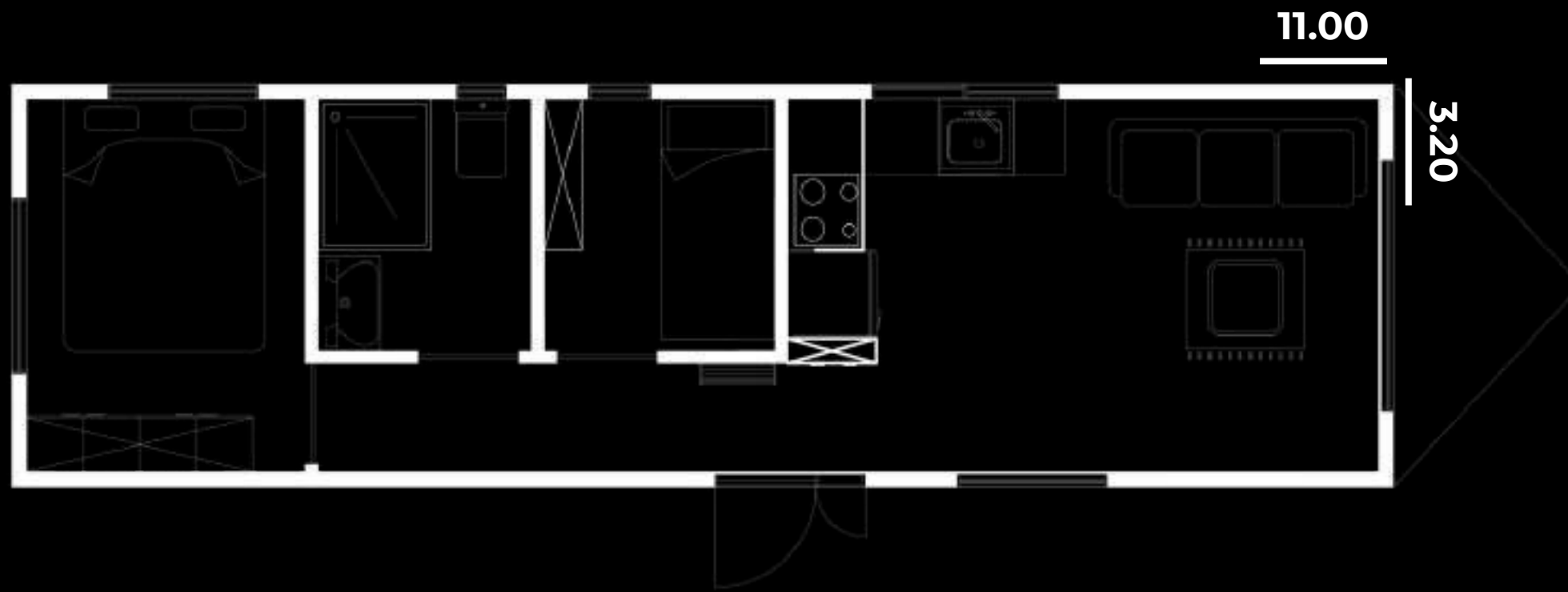


MB Tiny House
Production & Quality Living



MB11 Comfort

MB11 Comfort



MB Tiny House
MB Production, Globally Living



MB Tiny House
MB Production Globally Living



General Features

MB11 Comfort

Length:	Width:	Capacity:	Category:
11.00 m	3.20 m	6-8	O3

MB11 Comfort is an O3 Type-Approved tiny house model, measuring 11 meters in length and 320 cm in width, designed with family living in mind and suitable for permanent residence. The greatest advantage of this model is that it offers both a separate master bedroom and an independent children's bedroom on the ground floor. This layout, which is rarely seen in tiny house models, provides privacy and organization in daily life.

Strong in terms of energy efficiency, MB11 Comfort can reach an electricity generation capacity of 5.94 kW thanks to 9 solar panels that can be installed on the roof. This feature offers a significant advantage for users aiming for off-grid living or reduced energy costs.



MB Tiny House
MB Production Globally Living



Simplify Your Life

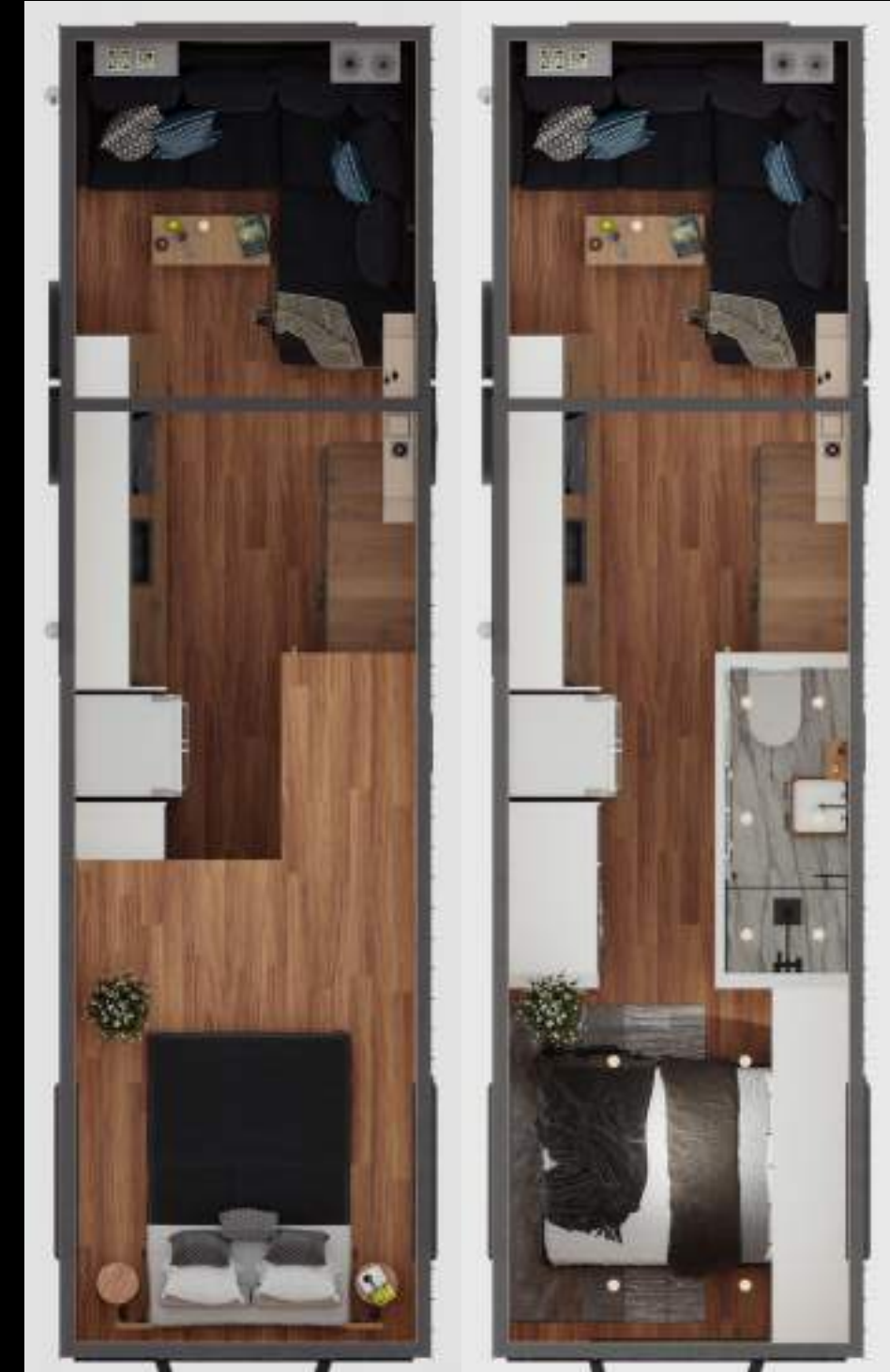
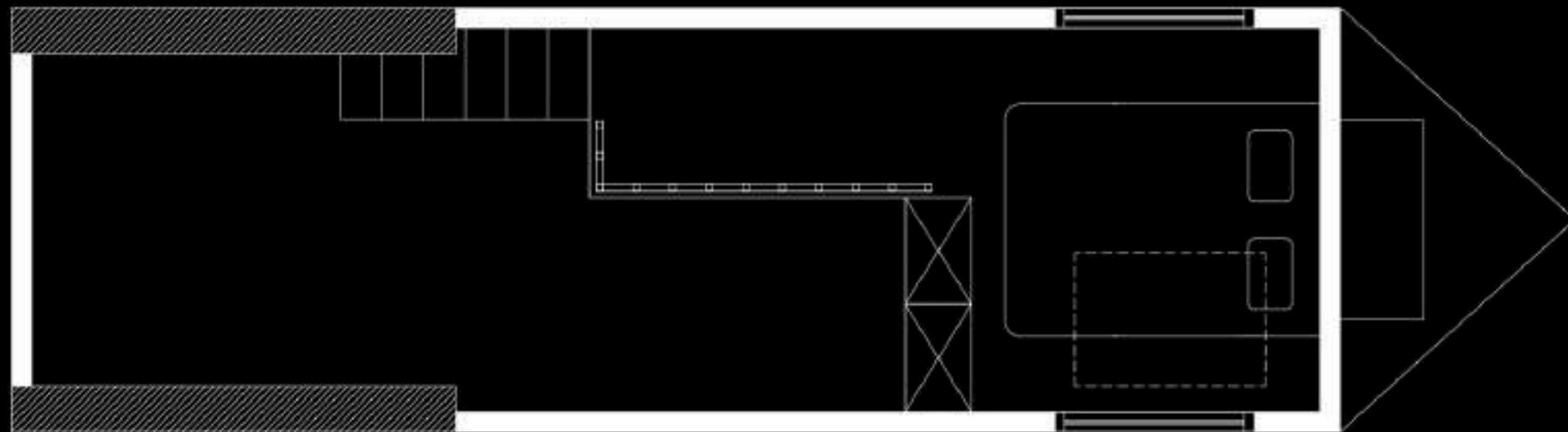
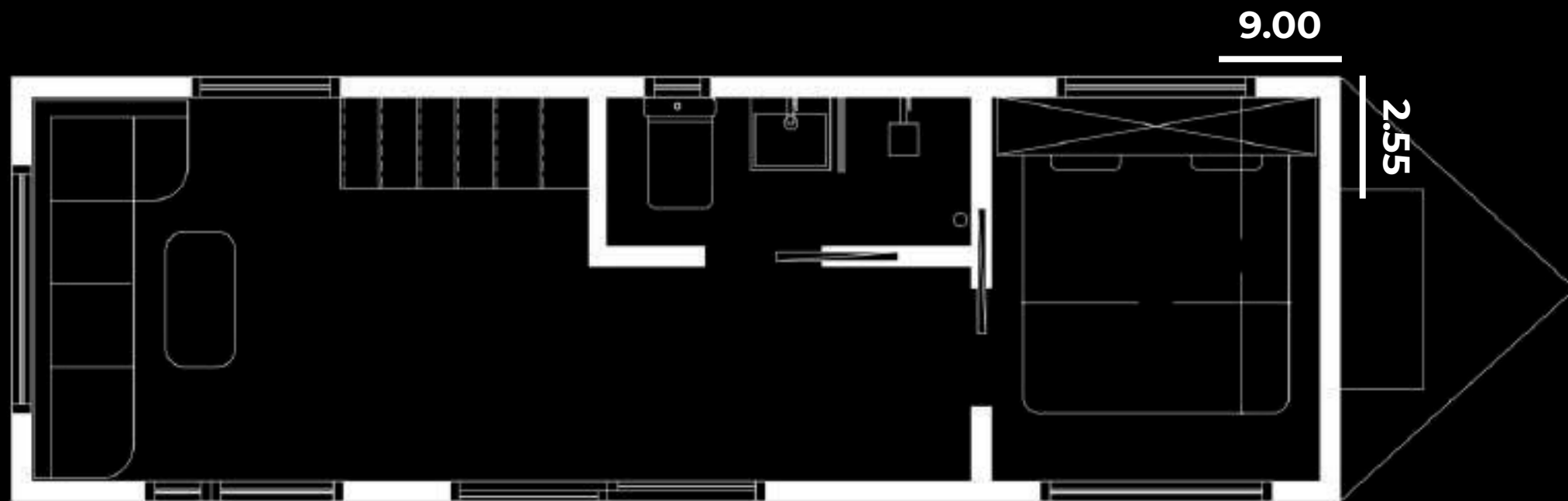


MB Living
MB Eco

MB9 2+1



MB 2+1A



MB Tiny House
MB Production, Globally Living

Simplify Your Life



General Features

MB9 2+1



MB Tiny House
Production, Globally Living



Length: **9.00 m** Width: **2.55 m** Capacity: **4-6** Category: **O2**

Our MB9 2+1 Tiny House model is 900 cm in length and 255 cm in width. The MB9 2+1 mobile home includes 1 loft area, 1 bathroom, 1 kitchen, 1 bedroom, and a living room, and can accommodate 4–6 people.

With its 2+1 configuration — consisting of a master bedroom and an additional bedroom — it offers a functional living area and a spacious layout.

Strong in terms of energy efficiency, the MB9 2+1 model can reach an electricity generation capacity of 4.62 kW thanks to 7 solar panels that can be installed on the roof. This feature provides a significant advantage for users aiming for off-grid living or reduced energy costs.



MB Tiny House
MB Production, Globally Living



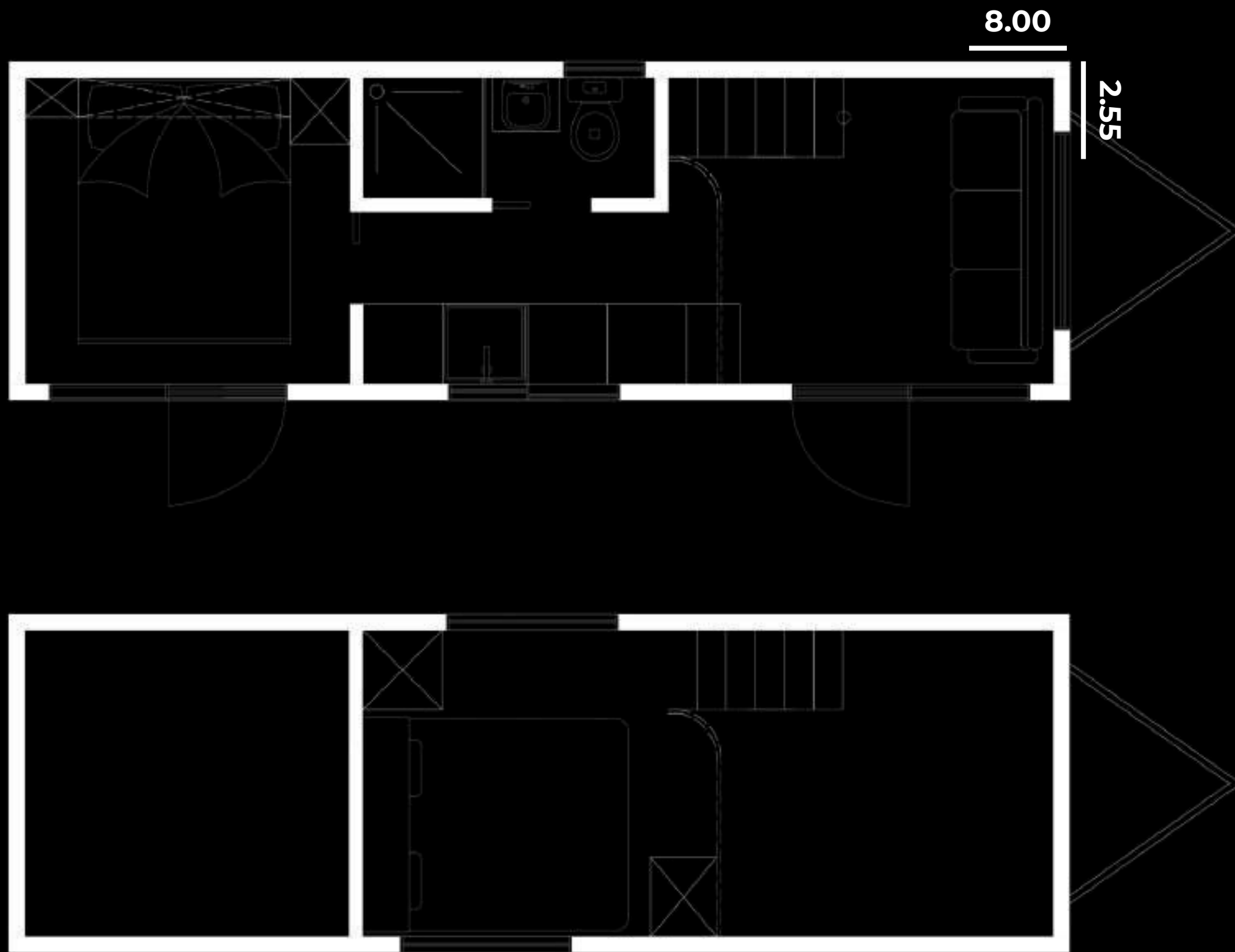


MB Tiny House
MB Production, Globally Living



MB8 2+1

MB8 2+1



MB Tiny House
MB Production, Globally Living



General Features

MB8 2+1



MB Tiny House
MB Production, Globally Living



Length:	Width:	Capacity:	Category:
8.00 m	2.55 m	4-6	O2

MB8 2+1 is one of our most preferred models, measuring 8.00 meters in length and 2.55 meters in width. Thanks to its separate bedroom layout, it is highly practical and offers comfortable living through its functional space planning.

The model includes one loft area and can accommodate up to 4-6 people.

Strong in terms of energy efficiency, the MB8 2+1 model can reach an electricity generation capacity of 3.96 kW thanks to 6 solar panels that can be installed on the roof. This feature provides a significant advantage for users aiming for off-grid living or reduced energy costs.



MB Tiny House
MB Production, Globally Living



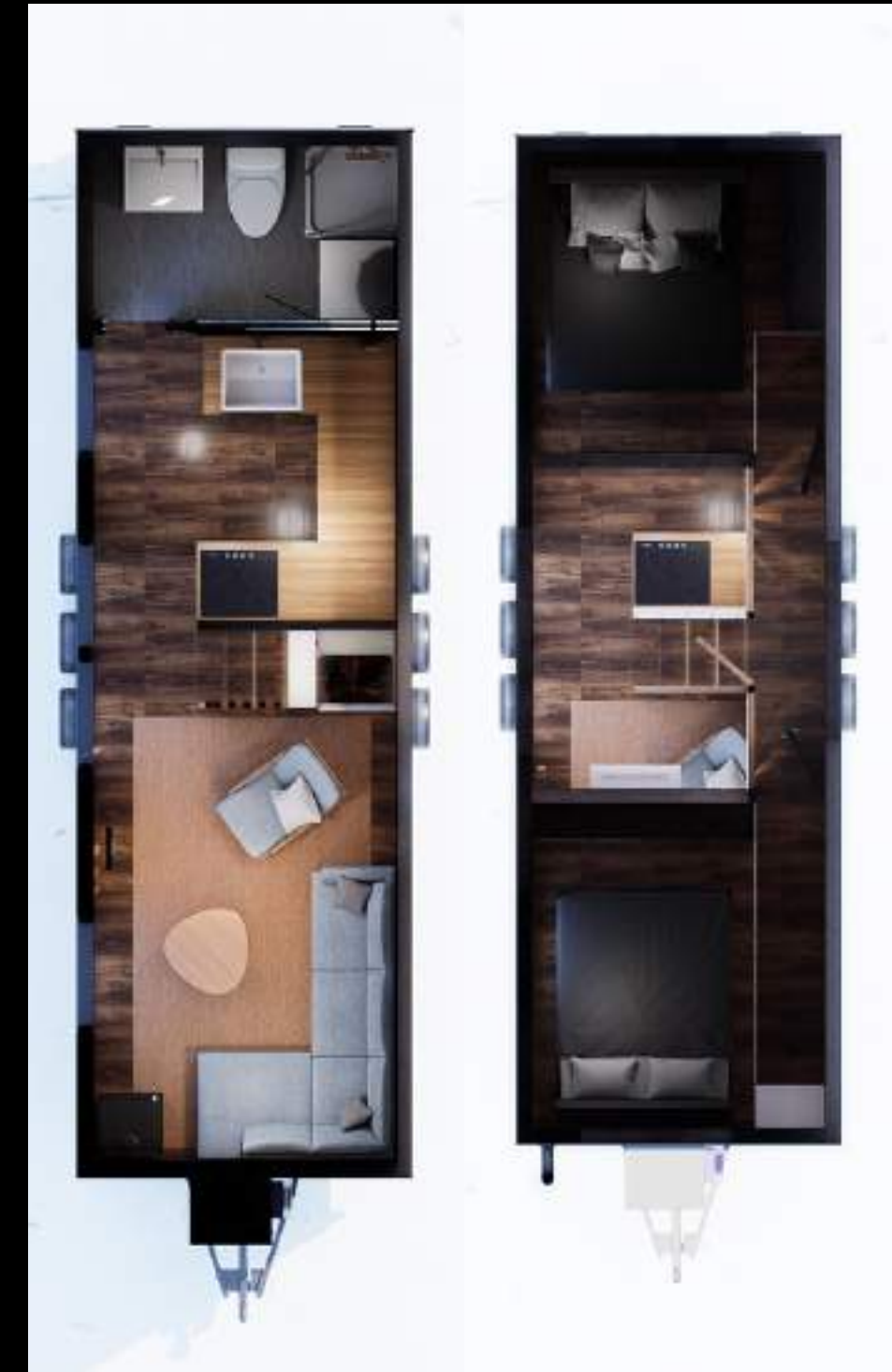
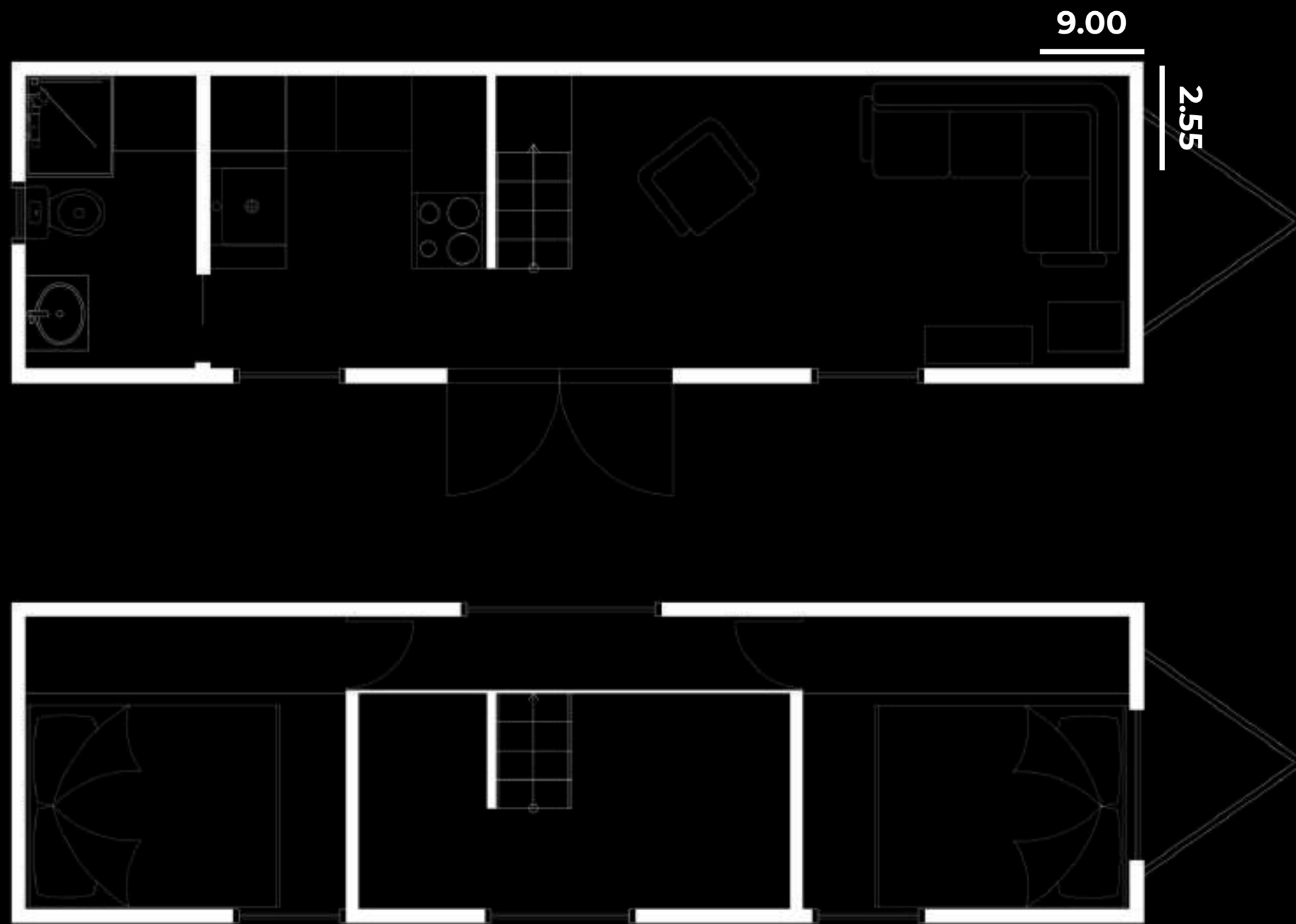


The Tiny House Collective
Sustainable Living



MB9 Catwalk

MB9 Catwalk



MB Tiny House
MB Production, Globally Living



General Features

MB 9 Catwalk



MB Tiny House
MB Production, Globally Living



Length:	Width:	Capacity:	Category:
9.00 m	2.55 m	6-8	O2

MB9 Catwalk Tiny House is an innovative model featuring a specially designed catwalk detail and offering full standing height in both loft areas. Measuring 9.00 meters in length and 2.55 meters in width, the structure creates a spacious and functional living area thanks to the walkable catwalk that connects the two lofts.

With strong energy efficiency, the MB9 Catwalk can reach an electricity generation capacity of 4.62 kW thanks to 7 solar panels that can be installed on the roof. It provides a powerful energy infrastructure that supports off-grid or low energy-cost living.



MB Tiny House
MB Production, Globally Living





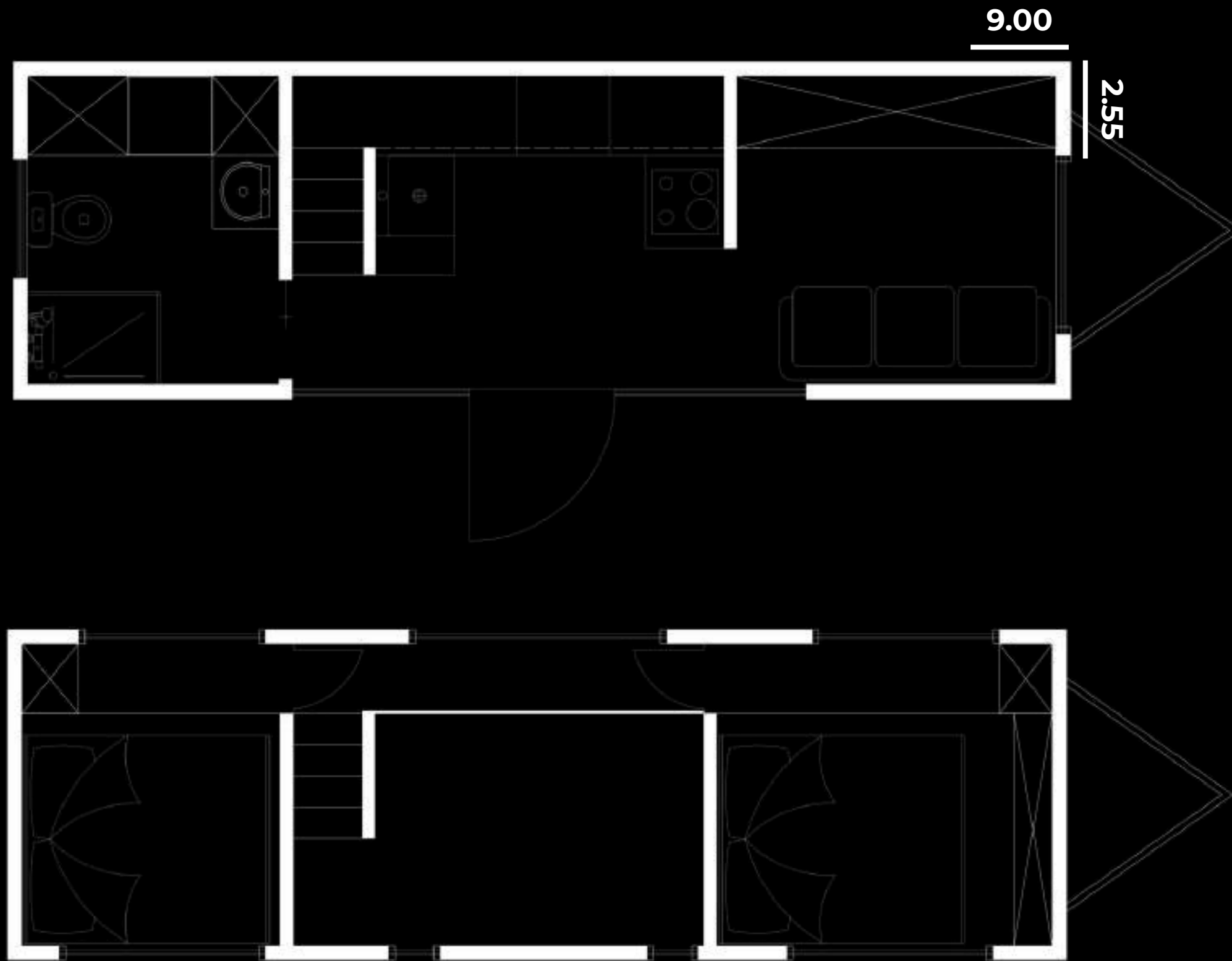
MB Tiny House
MB Production, Global Living



MB9 Triangle



MB9 Triangle



MB Tiny House
MB Production, Globally Living



General Features

MB9 Triangle



MB Tiny House
MB Production, Globally Living



Length:	Width:	Capacity:	Category:
9.00 m	2.55 m	4-6	O2

MB9 Triangle is a tiny house model that stands out with its unique triangular façade design and aesthetic structure reminiscent of bungalow architecture. Measuring 9 meters in length, the model offers a comfortable and inviting living space thanks to its spacious interior layout.

It features two large and airy loft areas, connected by a walkable catwalk that allows full standing height. A separate living room and a spacious kitchen layout provide ease of use in daily life. With its balanced layout, it reflects the distinctive MB Tiny House design approach.

With strong energy efficiency, the MB9 Triangle can reach an electricity generation capacity of 4.62 kW thanks to 7 solar panels that can be installed on the roof. It offers a powerful energy infrastructure supporting off-grid or low energy-cost living.



MB Tiny House
MB Production, Globally Living





MB Tiny House
MB Production, Globally Living

MB9 3+1



MB9 3+1



MB Tiny House
MB Production, Globally Living



General Features

MB9 3+1



MB Tiny House
MB Production, Globally Living

Length: **9.00 m** Width: **2.55 m** Capacity: **6-8** Category: **O2**

One of our most preferred models, the MB9 3+1 Tiny House, is a modern mobile home offering spacious and comfortable living areas. Featuring one separate bedroom, two independent loft areas, and a large living space, this model is an ideal solution for families and users who need more living space. The independent positioning of the loft areas allows the living room to become a more open and airy space.

With strong energy efficiency, the MB9 3+1 can reach an electricity generation capacity of 4.62 kW thanks to 7 solar panels that can be installed on the roof. It provides a powerful energy infrastructure that supports off-grid or low energy-cost living.



MB Tiny House
MB Production. Globally Living

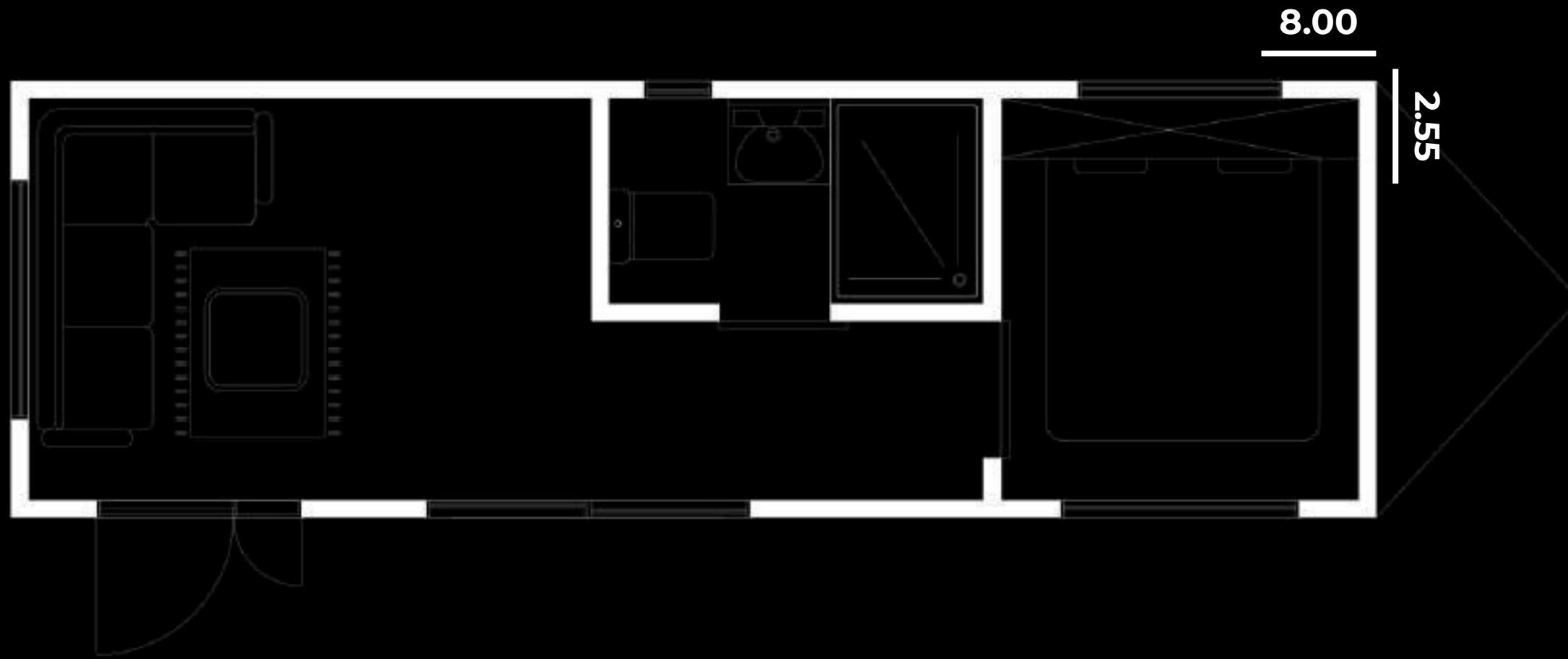


MB Tiny House
MB Production, Globally Living

MB8 Loftless



MB 8 Loftless



MB Tiny House
MB Production, Globally Living



General Features

MB 8 Loftless



MB Tiny House
MB Products Globally Living

Length:	Width:	Capacity:	Category:
8.00 m	2.55 m	2-4	O2

Our MB8 Loftless Tiny House model offers a simple and functional living space with its single-storey, loft-free design. It measures 800 cm in length and 255 cm in width. The model includes one bedroom, one kitchen, one bathroom, and a living room. Its key advantage is that it is easy to transport and relocate, and it can accommodate 2–4 people.

With strong energy efficiency, the MB8 Loftless can reach an electricity generation capacity of 3.96 kW thanks to 6 solar panels that can be installed on the roof. It provides a powerful energy infrastructure supporting off-grid or low energy-cost living.



MB Tiny House
MB Production, Globally Living





MB Tiny House
MB Production, Globally Living



MB 8

MB 8



Tiny House
Action, Globally Living

Simplify Your Life



General Features

MB 8



MB Tiny House
MB Production, Globally Living

Length:	Width:	Capacity:	Category:
8.00 m	2.55 m	4-6	O2

MB8 Tiny House is a model that offers maximum spaciousness within compact dimensions, measuring 8 meters in length and 2.55 meters in width. Featuring a single loft, the structure provides a simple and comfortable living space with its large bathroom and functional kitchen.

With its minimalist design and open layout plan, it is an ideal tiny house option for users who appreciate simplicity and prefer airy living spaces.

With strong energy efficiency, the MB8 can reach an electricity generation capacity of 3.96 kW thanks to 6 solar panels that can be installed on the roof. It offers a powerful energy infrastructure supporting off-grid or low energy-cost living.



MB Tiny House
MB Production, Globally Living

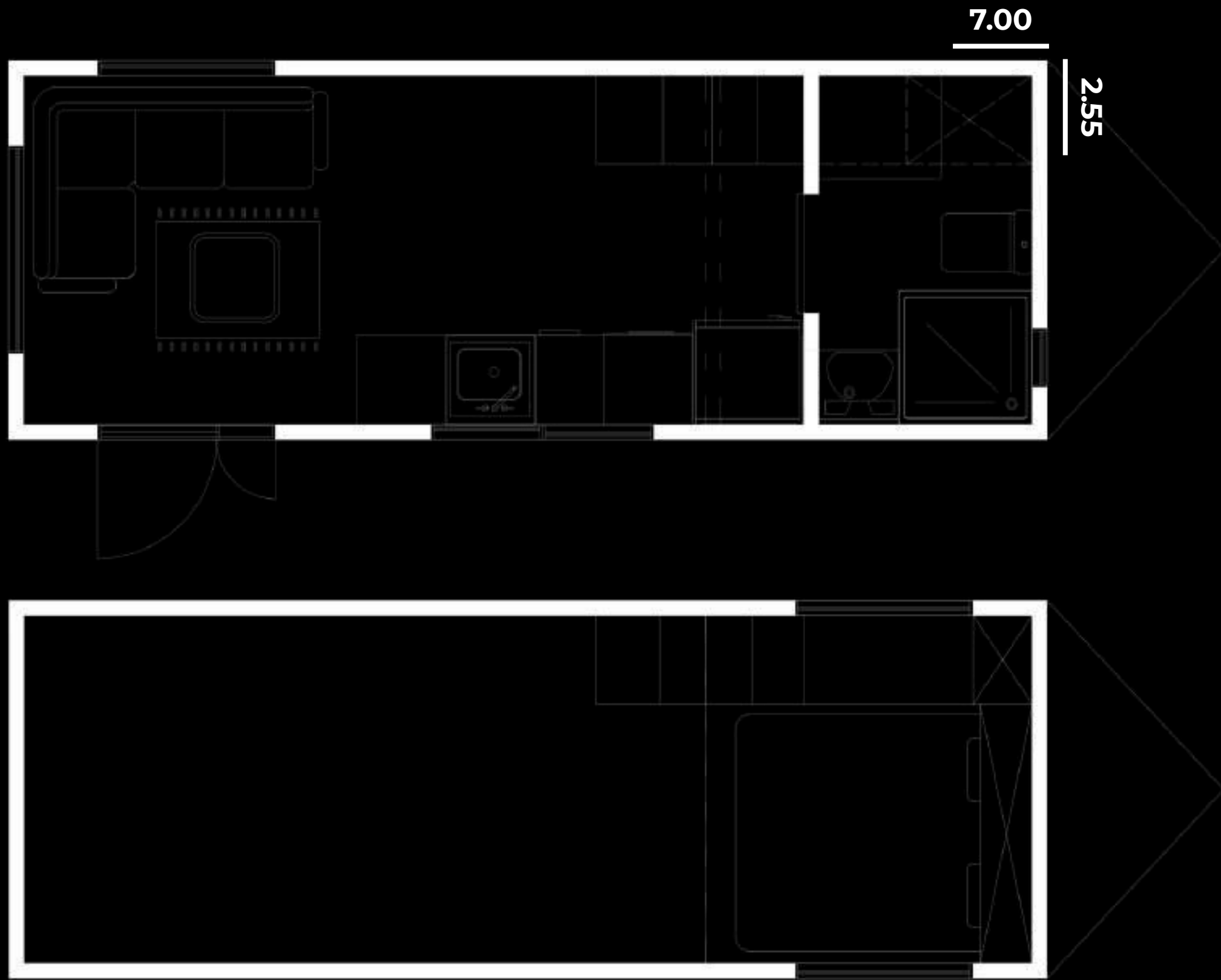


MB Tiny House
The Production, Globally Moving



MB 7

MB 7



MB Tiny House
MB Production, Globally Living



House
Globally Living



General Features

MB7

Length: **7.00 m** Width: **2.55 m** Capacity: **4-6** Category: **O2**

MB7 Tiny House is a practical model offering a spacious living area within compact dimensions, measuring 7 meters in length and 2.55 meters in width. Featuring a single loft, the structure comfortably meets daily living needs with its large bathroom and functional kitchen.

With its minimalist design and open layout plan, it is an ideal tiny house solution for users who appreciate simplicity and prefer airy living spaces.

With strong energy efficiency, the MB7 can reach an electricity generation capacity of 3.30 kW thanks to 5 solar panels that can be installed on the roof. It provides a powerful energy infrastructure supporting off-grid or low energy-cost living.



MB Tiny House
MB Products Globally Living



MB Tiny House
MB Production Globally Living

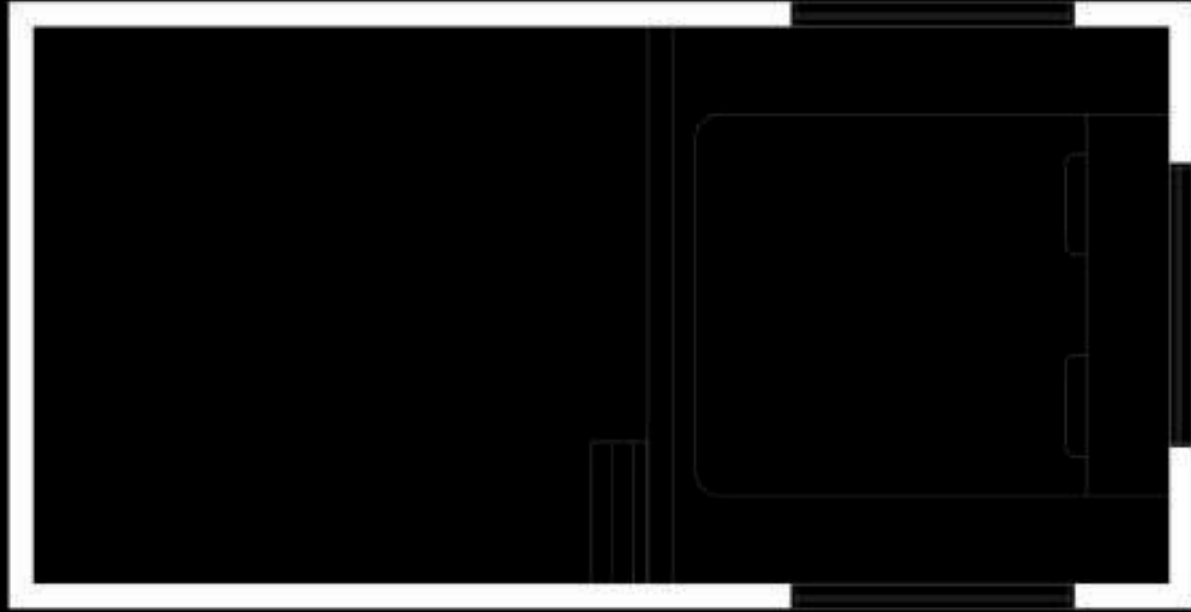
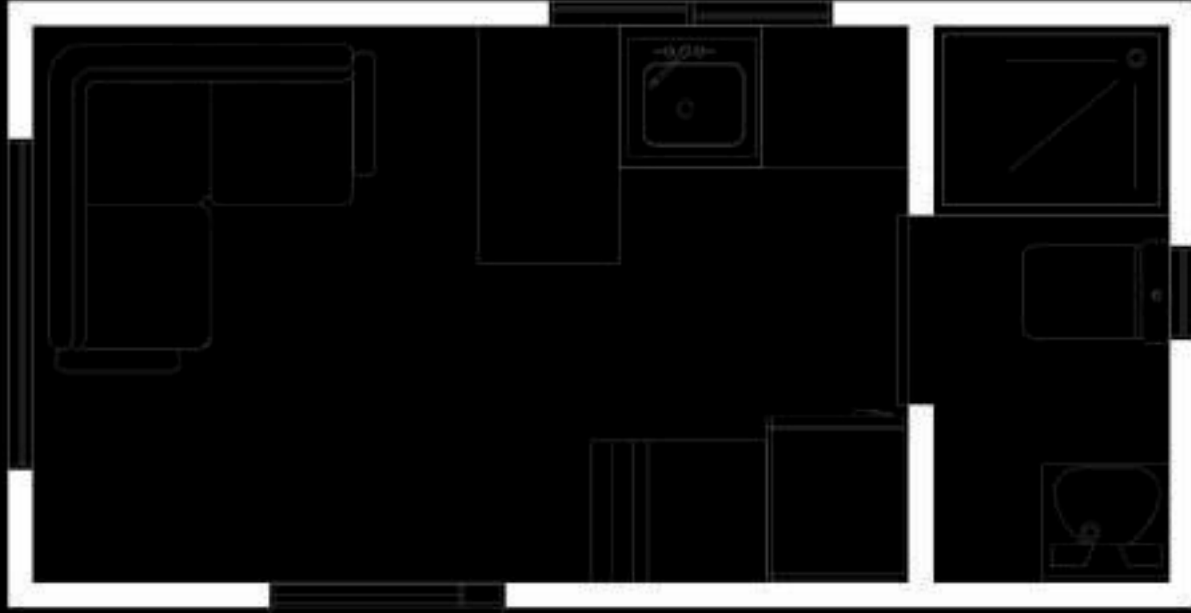


MB 5

MB 5

5.00

2.55



MB Tiny House
MB Production, Globally Living

Simplify Your Life



General Features

MB 5



MB Tiny House
MB Production, Globally Living

Length:	Width:	Capacity:	Category:
5.00 m	2.55 m	4-6	O2

MB5 Tiny House is the smallest and most easily mobile model in our tiny house series, measuring 5 meters in length and 2.55 meters in width. Thanks to its compact structure, it offers exceptional portability and provides an ideal solution for those who prefer a minimalist lifestyle. Featuring a single loft, the MB5 ensures efficient use of space with its functional kitchen and bathroom despite its small dimensions. With its charming design and lightweight construction, it stands out as an excellent choice for those seeking the tiny house experience and mobile living, as well as for weekend getaways or temporary stays. With strong energy efficiency, the MB5 can reach an electricity generation capacity of 2.64 kW thanks to 4 solar panels that can be installed on the roof. It offers a powerful energy infrastructure supporting off-grid or low energy-cost living.





MB Tiny House
MB Production, Globally Living



Aluminum Framing

Aluminum Composite

Rock Wool

Plywood

EPDM Membrane

Cladding Panels

XPS Insulation

Thermowood

Aluminum Composite

Timber

Laminate Parquet

Moisture Barrier

Double Glass Window

XPS Insulation

Underlayment

Aluminum Framing

Rock Wool

Underfloor Heating

Galvanized Steel

Plywood

Timber

XPS Insulation

Cladding Panels

Rock Wool

Polycarbonate

L A Y E R S

MB Tiny House

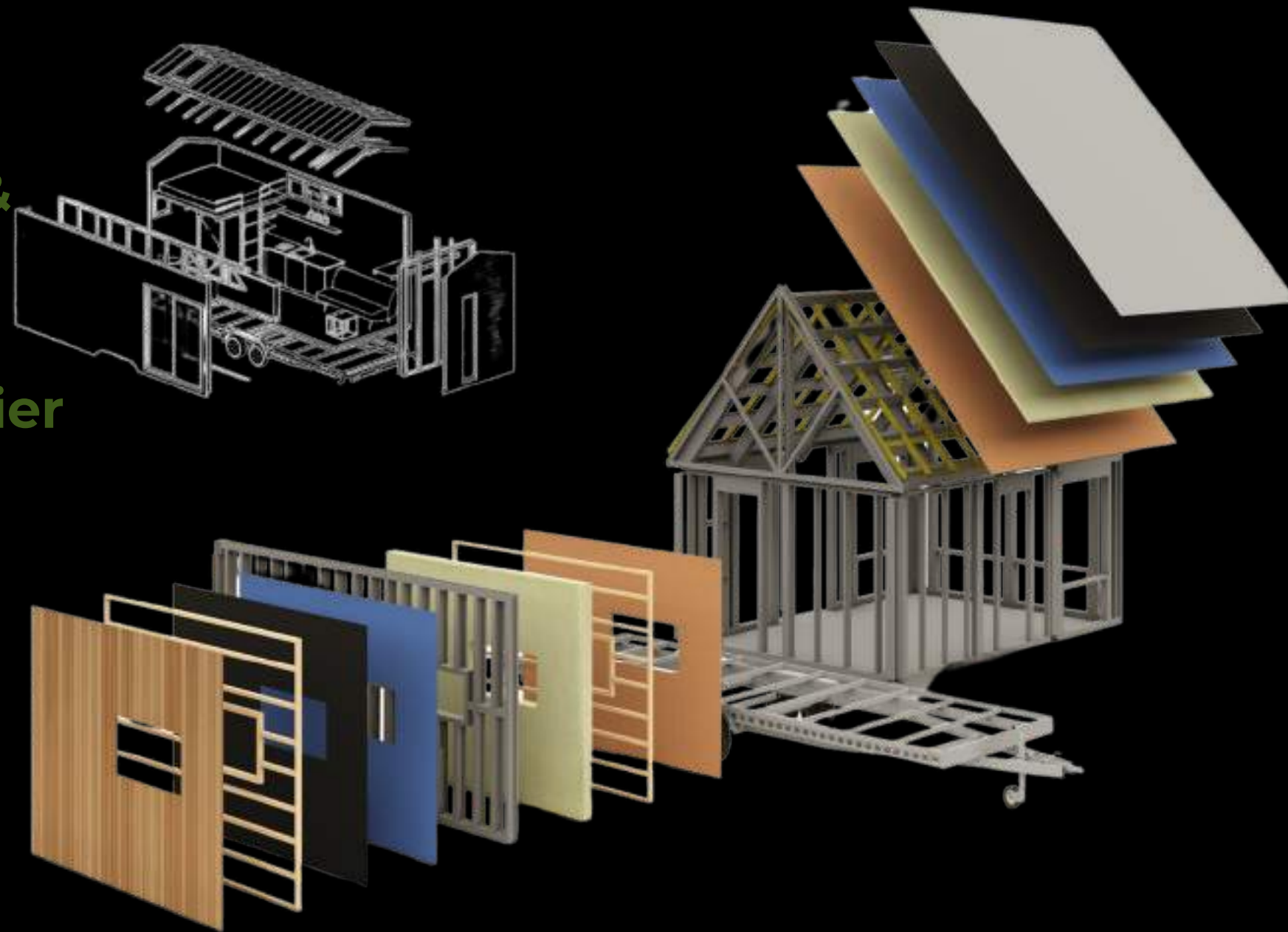


MB Tiny House
MB Production, Globally Living

Wall, Roof, and Floor Layers:

Walls:

- 1-Thermowood & Aluminum
- 2-Timber
- 3- Moisture Barrier
- 4-XPS
- 5-Galvanized
- 6-Steel Frame
- 7-Rock Wool
- 8-Timber
- 9-Cladding



Roof:

- 1-Aluminum Panel
- 2-EPDM Membrane
- 3-XPS
- 4-Steel Frame
- 5-Rock Wool
- 6-Timber
- 7-AGT Cladding

Floor:

- 1-Laminate
- 2-Underfloor Heating
- 3-Plywood
- 4-RockWool
- 5-XPS
- 6-Polycarbonate

Specifications



Type: O2 and O3 Type Approval Certificates, License Plate and Registration Documents

Chassis: ST37 quality steel and 100 NPU double chassis, ST37 steel cross members preventing bending, and ST37 upper chassis

Axles and Equipment: Double axle with braking system, 3,500 kg / 10,000 kg load capacity, braked coupling, 4 stabilizing jacks, 1 front support jack, side marker lights, tail lights, 4 tires and rims

Frame: Galvanized steel profiles

Insulation: Rock wool, XPS, moisture barrier, EPDM membrane

Exterior Cladding: Thermowood pine + aluminum composite cladding

Interior Walls: Laminate-coated wall paneling & birch plywood cladding

Flooring: Sill plate and parquet + 18 mm plywood + rock wool + XPS + polycarbonate

Roof: Plywood + rock wool + XPS + EPDM membrane + aluminum composite

Doors and Windows: Thermal insulated comfort and tempered glass + PVC frames

Kitchen: MDF and acrylic cabinets, solid oak kitchen countertop, farmhouse sink, tap

Bathroom: Marble-pattern wall panels + sink + tap + overhead shower tap + solid oak countertop + cabinet + toilet + shower cabin

Lighting: Spot and LED interior lighting + interior and exterior wall-mounted lighting fixtures

Electrical Installation: NHMX halogen-free 3x6, 3x2.5, 3x1.5 cables, protective conduit pipes, switches and sockets, circuit breakers and residual current protection, TV mounting bracket, grounding rod, electrical installation planning, air conditioning infrastructure

Plumbing: PPR and PPRC clean and waste water installation

Lighting (additional details): Interior spot and LED lighting, bedside wall lamps, exterior façade wall-mounted lighting



MB Tiny House
MB Production, Globally Living

T E C H N I C A L

Standard Equipment	Midline	Highline
Type		
O2 and O3 Type Approval Regulation, Required Documents for License		
Plate and Registration	S	S
Trailer		
ST37 Steel Quality and 100NPU Double Chassis, ST37 Steel Cross Members	S	S
Preventing Bending, ST37 Upper Chassis	S	S
Insulation		
Rock Wool, XPS, Moisture Barrier, EPDM Membrane	S	S
Interior Walls		
Laminate-Coated Wall Paneling & Birch Plywood Cladding	S	S
Exterior Cladding		
Thermowood Pine and Aluminum Composite (RAL 7016, White, Black)	S	S
Roof		
Aluminum Composite (RAL 7016, White, Black)		
Doors and Windows	S	S
Thermally Insulated PVC Doors and Windows, 4+12+12 or 4+16+4 Double		
Glazing	S	S
Cabinetry		
MDF and Acrylic Cabinets for Kitchen, Bathroom, Bedroom and Loft	S	S

Specifications may vary depending on the selected model. S: Standard O: Optional

	Midline	Highline
Kitchen		
Cabinets, Countertop, Faucet, Sink	S	S
Bathroom		
Cabinet, Shower Cabin, Toilet, Washbasin, Faucet, Rain Shower	S	S
Countertops		
Solid Oak Countertops for Kitchen and Bathroom	S	S
Flooring		
Class 32 Laminate Flooring	S	S

	Midline	Highline
Electrical System		
NHMX Halogen-Free 3x6, 3x2.5, 3x1.5 Cables, Switches, Sockets,	S	S
LED and Spot Lighting, Wall Lamps, Interior and Exterior Lighting,		
TV Mount		
Plumbing System		
PPR and PPRC Water Pipes, Clean and Waste Water Connections	S	S

Specifications may vary depending on the selected model. S: Standard O: Optional



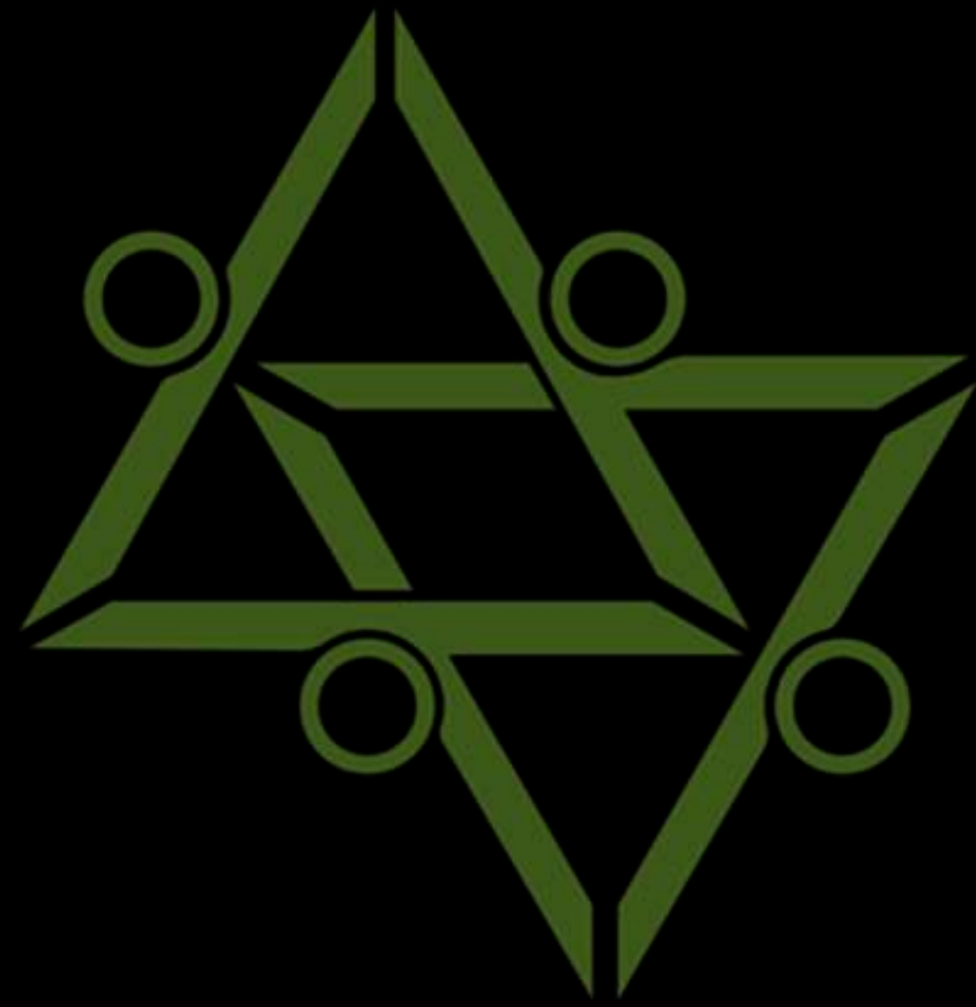
MB Tiny House
MB Production, Globally Living

Mechanical	
Water Heater 65 LT	O
Water Heater 80 LT	O
Air Conditioner 12,000 BTU	O
Air Conditioner 18,000 BTU	O
Electric Underfloor Heating	O
Electric Smart Thermostat / m ²	O
Hydronic (Water-Based) Underfloor Heating	O
Wood Stove and Floor Protection Plate (40x40)	O
LPG Boiler-Supported Underfloor Heating	O
Additional Copper Cable for Air Conditioner	O
Pleated Curtain / m ²	O
Off-Grid Solutions	
Thetford Cassette Toilet	O
Compost Toilet	O
Solar Panels, Lithium Batteries, and Inverter System	O
Solar Panel Infrastructure Cable	O
Fresh Water Tank 400 L	O
Grey Water Tank 150 L	O

Water Booster Pump and Floats	O
Heating Element to Prevent Water Tank Freezing for Cold Climates	O
Chimney: Insulated and Painted	O
Cast Iron Stove, Aluminum Plates, Stove Base Legs Set	O
Exterior Storage Cabinet (Thermowood and Aluminum Composite)	O

O
P
T
I
O
N
S

Specifications may vary depending on the selected model. S: Standard O: Optional



MB TINY HOUSE

📞 +90 538 774 03 53

✉️ sales@mbtinyhouse.com

🌐 www.mbtinyhouse.com